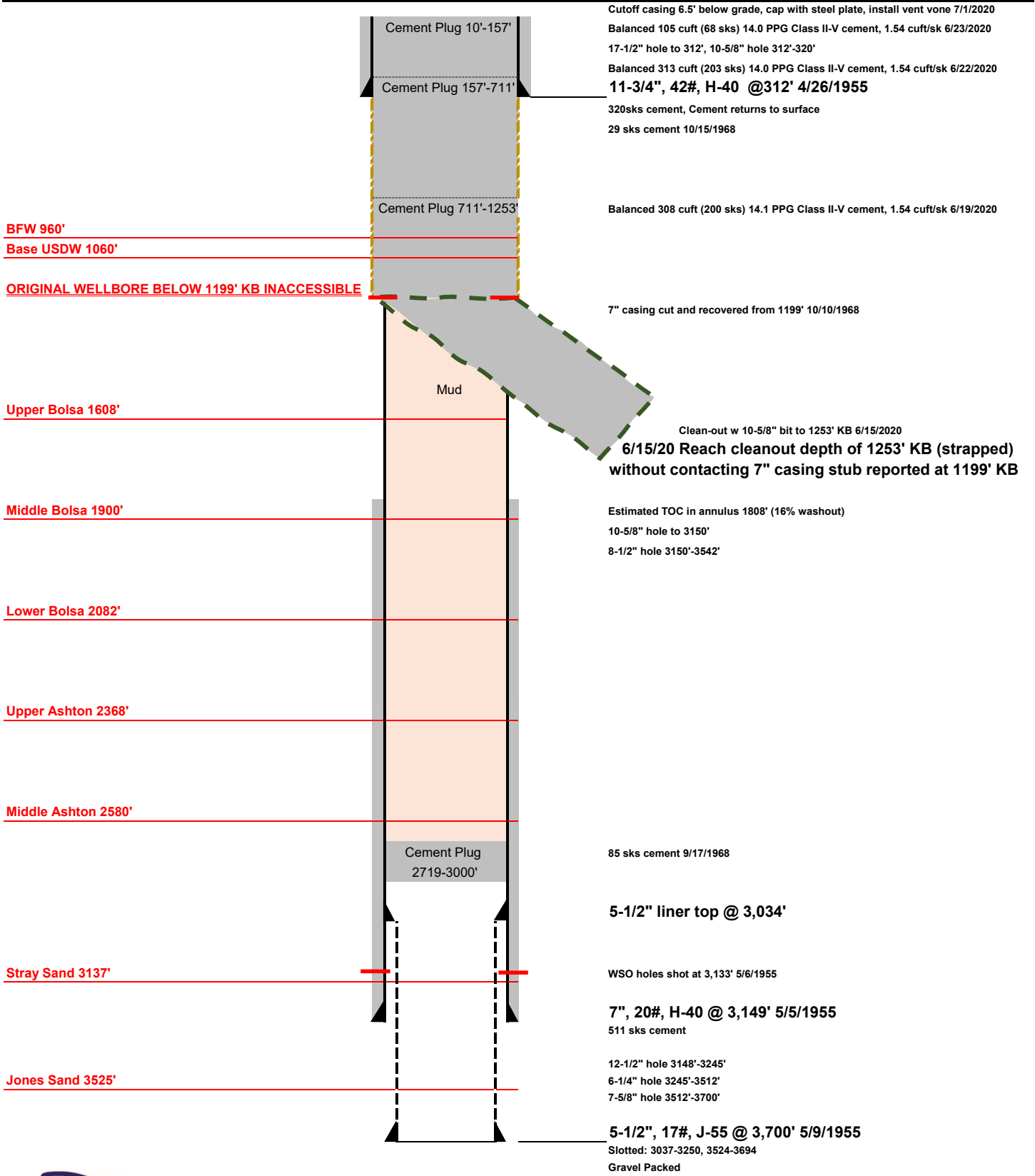


<p>7/1/2020 Field: Huntington Beach Lease: McCallen County: Orange</p>	<p>Armstrong Oil Inc. McCallen #1 API 0405902342 Final Re-abandonment WBD</p>	<p>KB: 10' GL: 35' Sec: 11 TWP: 06S RNG: 11W BM: SB Whipstock @2866'</p>
--	--	--



Cutoff casing 6.5' below grade, cap with steel plate, install vent vone 7/1/2020
Balanced 105 cuft (68 sks) 14.0 PPG Class II-V cement, 1.54 cuft/sk 6/23/2020
17-1/2" hole to 312', 10-5/8" hole 312'-320'
Balanced 313 cuft (203 sks) 14.0 PPG Class II-V cement, 1.54 cuft/sk 6/22/2020
11-3/4", 42#, H-40 @312' 4/26/1955
320sks cement, Cement returns to surface
29 sks cement 10/15/1968

Balanced 308 cuft (200 sks) 14.1 PPG Class II-V cement, 1.54 cuft/sk 6/19/2020

7" casing cut and recovered from 1199' 10/10/1968

Clean-out w 10-5/8" bit to 1253' KB 6/15/2020
6/15/20 Reach cleanout depth of 1253' KB (strapped) without contacting 7" casing stub reported at 1199' KB

Estimated TOC in annulus 1808' (16% washout)
10-5/8" hole to 3150'
8-1/2" hole 3150'-3542'

85 sks cement 9/17/1968

5-1/2" liner top @ 3,034'

WSO holes shot at 3,133' 5/6/1955

7", 20#, H-40 @ 3,149' 5/5/1955
511 sks cement

12-1/2" hole 3148'-3245'
6-1/4" hole 3245'-3512'
7-5/8" hole 3512'-3700'

5-1/2", 17#, J-55 @ 3,700' 5/9/1955
Slotted: 3037-3250, 3524-3694
Gravel Packed

BFW 960'

Base USDW 1060'

ORIGINAL WELLBORE BELOW 1199' KB INACCESSIBLE

Upper Bolsa 1608'

Middle Bolsa 1900'

Lower Bolsa 2082'

Upper Ashton 2368'

Middle Ashton 2580'

Stray Sand 3137'

Jones Sand 3525'

